



PHILLIP JEFFRIES LTD. HANGING INSTRUCTIONS

FRAMED WALLCOVERING

STOP: DO NOT CUT OR INSTALL UNTIL YOU HAVE READ THESE INSTRUCTIONS!

Thank you for choosing this fine hand crafted wallcovering. For the best results, we believe that a professional wallcovering installer should hang these wallcoverings.

DESCRIPTION:

Unique relief pattern of 8" squares creates an abstract geometric masterpiece with collection **FRAMED**. Hand crafted through a 2-step process; 1st a metallic wash is given to our classic Japanese Paper Weave ground, 2nd a grid pattern is hand screened with special pearlized inks to create an innovative raised effect. Available in 6 luminescent colorations. Solid coordinating grounds are also offered.

PREPARATION:

Before you cut and hang, please be sure you have:

1. The correct wallcovering and the correct amount of wallcovering to finish the job.
2. Inspect the wallcovering carefully to ensure it is free of defects:

If no defect is evident before installation, the material should be inspected after three (3) strips are installed. If any defect is evident at this time (or at any point in the installation) no additional material should be hung until Phillip Jeffries Ltd. is notified. **NO CLAIMS WILL BE ALLOWED FOR MORE THAN (3) STRIPS ON THE WALL.** All claims must be made within 60 days of the invoice date. No labor claims will be allowed at any time.

BUILDING & MATERIAL CONDITIONS: The building must be weather-tight with HVAC settings (including pressure, temperature and relative humidity) the same as those of an occupied building for three days prior to, throughout installation and three days after installation. The walls must be structurally sound including elimination of sources of moisture accumulation into the wall or wall cavity. The wallcovering must be in a clean and dry condition and must be stored at normal occupied building temperature and humidity for at least three days prior to installation. All adhesives and primers must be new, good quality, commercial grade materials, which have not been contaminated.

**IF YOU HAVE ANY QUESTIONS, PLEASE STOP AND CONTACT
PHILLIP JEFFRIES LTD. BEFORE PROCEEDING.**

WALL PREPARATION:

1. The walls to be covered must be properly prepared to insure that the wallpaper will adhere to the wall surface. Even the strongest adhesive can only work when the wall surface is clean and properly prepared.
2. Phillip Jeffries recommends that installers use a hard, acrylic, pigmented, wall-protecting primer that is **SPECIFICALLY** made for WALLCOVERING INSTALLATION and WALL PROTECTION.

DO NOT utilize R-35 on its own as a primer as R-35 is a light-duty adhesion promoting sizer, not a wall-protecting, wallcovering primer.

3. Allow the primer to dry thoroughly before hanging.

SEE REVERSE SIDE



PHILLIP JEFFRIES LTD.

HANGING INSTRUCTIONS

FRAMED WALLCOVERING

STOP: DO NOT CUT OR INSTALL UNTIL YOU HAVE READ THESE INSTRUCTIONS!

INSTALLATION

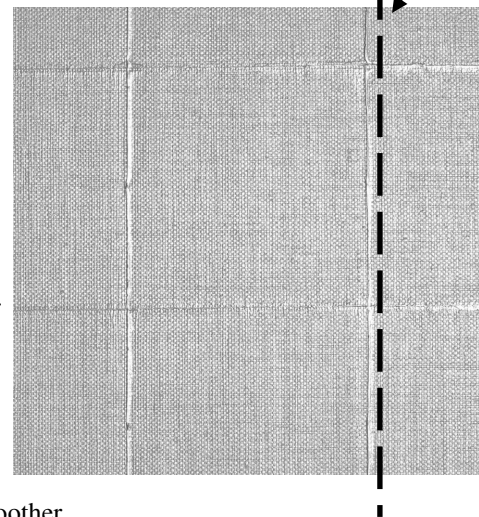
ADHESIVE

1. We recommend a clear, pre-mixed vinyl adhesive that penetrates the backing quickly to allow for expansion.
2. Apply the paste to the back of the paper, which will become flexible and easy to hang. Allow the paste to become tacky prior to hanging (exact time will vary based on temperature, humidity, etc.) Do not over soak while booking. If the backing is delaminating, you are booking too long.
3. Do not add excessive water to the paste as it may cause the backing paper to pull away from the front.
4. It is important to keep the face of the wallcovering free of adhesive and water.

TRIMMING

1. The edges are untrimmed and will require cutting a precision edge on your work table pattern side up.
2. Trimmed width is 32" (81.28 CM.)
3. To create a perfect seam, cut (see diagram) to the right of the vertical relief line. NOTE: The vertical & horizontal relief lines slightly waver, due the hand crafted element of this product. When making your precision cut, trim as close as possible to the vertical line without cutting into the raised relief portion of the line.
4. Trim edges with a VERY sharp razor blade. Change your blades often.
5. Solid Coordinates GLAZED WEAVE items 5741-5746: Edges are untrimmed and will require cutting a precision edge on your work table. Trimmed width is 34" (86.36 CM.)

Seam at Right of Dotted Line



MATCH

1. Repeat is 8" (20.23 CM.)
2. To create a perfect seam, cut (see diagram) to the right of the vertical relief line. NOTE: The vertical & horizontal relief lines slightly waver, due the hand crafted element of this product. When making your precision cut, trim as close as possible to the vertical line without cutting into the raised relief portion of the line.
3. Once precision edge is cut on both strips, seams should be butted together to create a straight match.

TIPS

1. Use a firm bristle brush when hanging, so that you do not damage the face of the wallcovering. DO NOT use a plastic smoother.
2. DO NOT allow paste or excessive water to stain the front of the wallcovering. Both paste and excessive water will change the color of both the design and the wallcovering's natural texture on the face of the paper.
3. Paste, trim and hang one strip at a time.
4. Gently use a seam roller if needed on SEAMS ONLY. DO NOT use seam roller on raised relief lines as it will damage the surface of the wallcovering.
5. Consider using a light painters tape to cover the edges of previously installed strips, so that the paste coming out from the seams will not settle on the installed strips.
6. Subtle shading differences between strips tend to soften over time as the natural textured wallcoverings begins to oxidize.
7. Wallcovering has been treated with an water repellent finish. It may be cleaned using a damp cloth or soft brush attachment of a vacuum cleaner.